



WOODWARD, PIRES & LOMBARDO, P.A.  
ATTORNEYS AT LAW

Anthony P. Pires, Jr.

**Respond to the Naples Office:**  
3200 Tamiami Trail North  
Suite 200  
Naples, FL 34103  
(239) 649-6555  
apires@wpl-legal.com  
fax:(239) 649-7342

**MEMORANDUM**

TO: Board of Supervisors, River Ridge Community Development District ("District")  
FROM: Anthony P. Pires, Jr. Esq. *AP*  
DATE: November 8, 2017  
RE: Ownership/Maintenance Responsibility of Irrigation Lines

At the October 24, 2017 meeting of the Board of Supervisors ("Board"), discussion ensued concerning the materials/Exhibits prepared by the District Engineer depicting locations of the irrigation lines and systems owned by the District and the typical connections to the District's main irrigation transmission lines. It is the opinion and recommendation of staff, that in order to have a clear policy as to maintenance obligations and responsibilities, the Board should recognize and acknowledge the following:

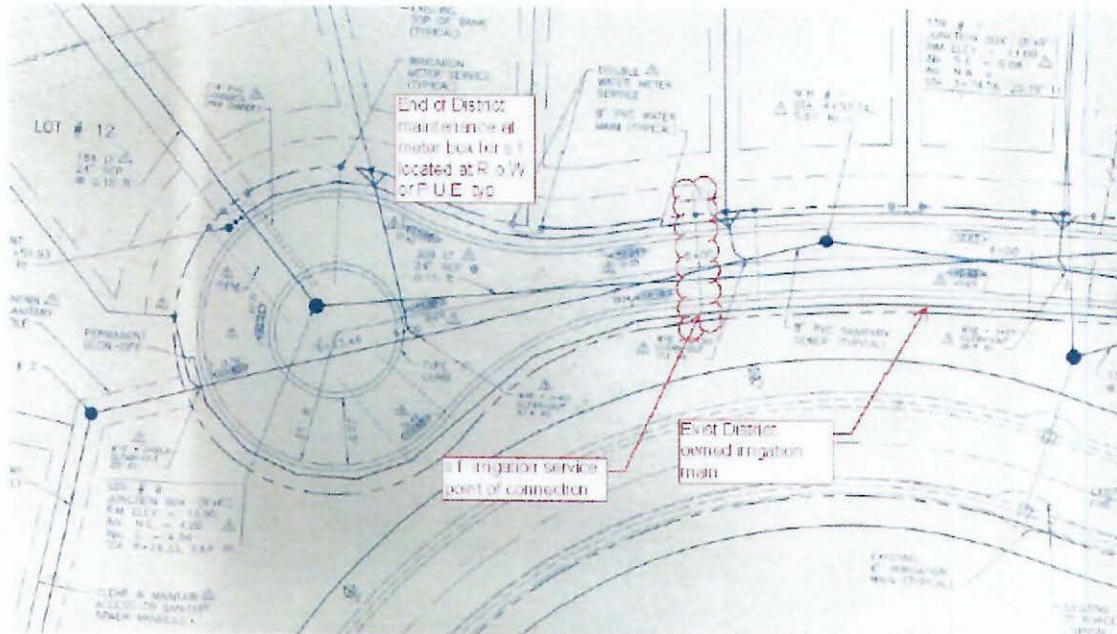
1. the District owns the connecting pipes and valves within the public utility easements and/or District roads rights-of-way that connect to the main irrigation transmission lines located within the public utility easements and/or District roads rights-of-way. As noted in the Exhibits "A", "B" and "C" provided at the October 24, 2017 Board meeting, the limits of the District's owned irrigation system includes all District owned facilities located within the District's right-of-way or public utility easement including but not limited to: pumping stations, gate valves, transmission mains, valve boxes, blow off assemblies, air release valves, back flow preventers and service connections up to the point of connection within the right-of-way and/or public utility easement
2. the operation and maintenance of such connecting pipes and valves and connection to the main irrigation line transmission lines is the general responsibility of the District.
3. by virtue of the operations and maintenance agreement between the District and the Pelican Sound Golf & River Club ("PSGRC"), the operation and maintenance of the District's connecting pipes and valves and connection to the main irrigation line transmission lines is the PSGRC's responsibility.

4. the responsibility for the operation and maintenance of the irrigation systems after the District owned point of connection is that of the individual homeowner, condominium or property owner's association.
5. the typical locations of said facilities are depicted and indicated on the attached Exhibits "A", "B" and "C".

Enclosure(s); Cc: w/enclosure(s); Chuck Adams, Jim Whitmore, Cleo Adams, Charlie Krebs

**SINGLE FAMILY**

In the case of single family units this may be a corps stop located in valve box located either in a District owned right-of-way or the parallel public utility easement. (Exhibit A)



**MULTI-FAMILY**

The point of connection for multi-family units may be a gate valve located at a tee in the service line that is located within a District owned right-of-way or a public utility easement. (Exhibit B and C)

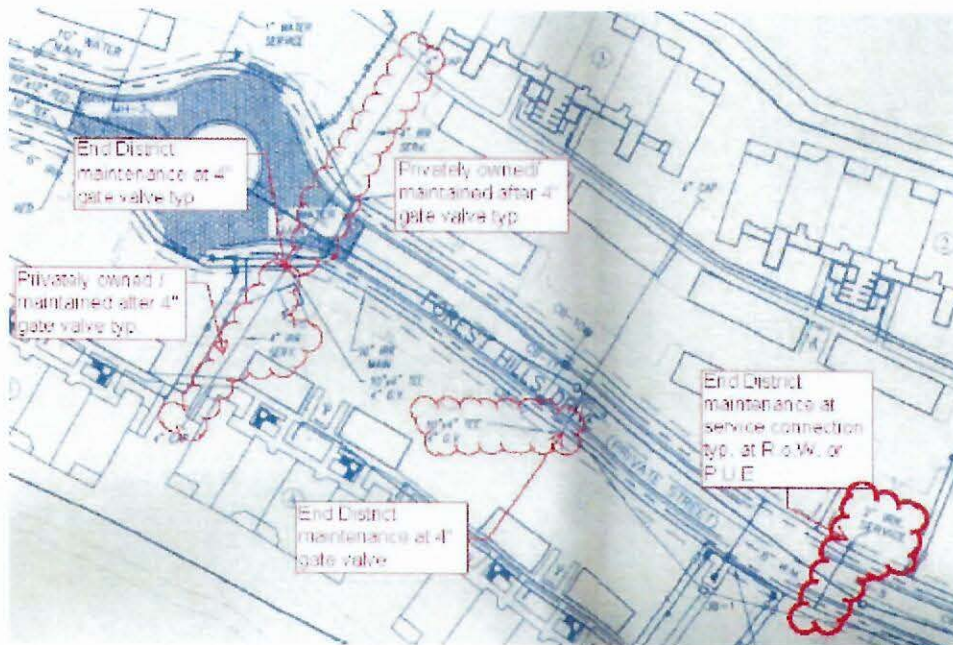


Exhibit B

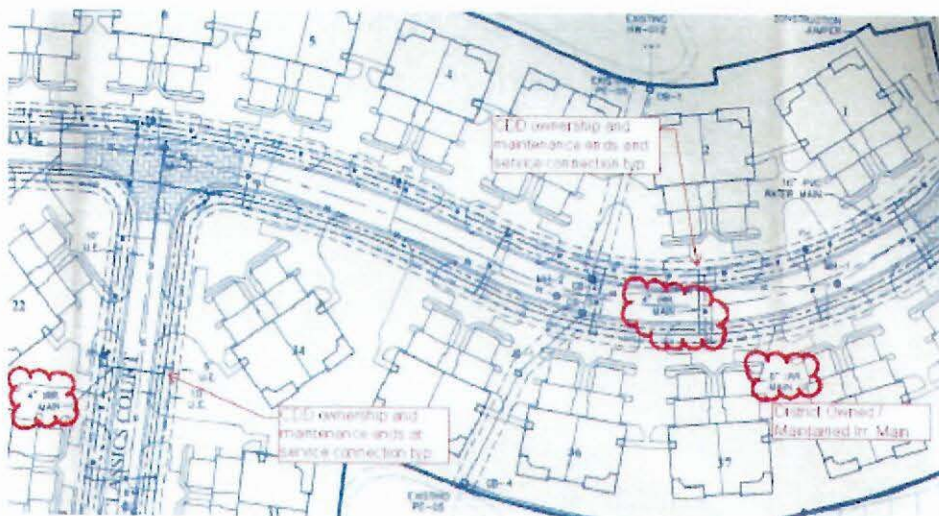


Exhibit C